



Apple Cabin



www.xinyuhousing.com

Contents

01. About xinyu & Apple Cabin

02. Products

- 20ft Apple cabin
- 30ft Apple Cabin
- 40ft Apple Cabin
- Mini Booth
- Apple Cabin Combinations

03. Accessories & Options

04. Transportation

01

About xinyu & Apple Cabin

Company Introduction

XINYU Integrated House Co., Ltd., established in 2020, is located in Jinan, Shandong. With an investment of \$10 million and a plant area of 20,000+ m², we export to North America, Europe, the Middle East, and more.

Our products include Detachable, Flat Pack, Folding, Expandable Container Houses, Apple cabin, Steel Structures, and Space Capsules. XINYU focuses on building eco-friendly, cost-effective solutions tailored to customer needs.

Our prefabricated houses are easy to transport, store, and assemble, improving efficiency and cutting costs. We maintain a modern quality management system and continue innovating to provide the best solutions for customers globally. Most of our products are CE certified.

We look forward to long-term cooperation. Please contact us with any ideas.



Certification

Quality Management System Certificate

XinYu Integrated Housing Co., LTD

Certificate No. CNYHE20125R05

Unified Social Credit Code: 91370112MA1UP726E

Registration Address: Room 1301, Xicheng Huajin Financial Center, No. 6 Faxing Road, Xingfu Street, Huaiyin District, Jinan City, Shandong Province, China
(multiple Business Licenses one site)

Production Address: Room 1301, Xicheng Huajin Financial Center, No. 6 Faxing Road, Xingfu Street, Huaiyin District, Jinan City, Shandong Province, China

Management system conforms to the standard: GB/T 19001-2016/ISO 9001:2015

The certificate is valid for the scope: Production and sales of containers

Date of issuance: June 08th, 2023
Date of expiry: June 07th, 2026

Note: After the issuance of this certificate, it will remain valid only if the certified organization accepts surveillance audit at regular intervals within the validity.

第一次监督审核 标识有效期
第二次监督审核 标识有效期
第三次监督审核 标识有效期

Authorized person (signature): *chen aixiang*
Company signature:

See the QR code above to check the valid information of the certificate.

XinYu Integrated Housing Co., Ltd.
Room 1301, Xicheng Huajin Financial Center, No. 6 Faxing Road, Xingfu Street, Huaiyin District, Jinan City, Shandong Province, China

Certificate of Compliance

No. 3N200221-SCDC77
Test Report no. MCEZ-20/03-0220-CPR

Certificate's Holder: XinYu Integrated Housing Co., LTD
Huaiyin District, Jinan City, Shandong Province, China

Certification ECM Mark:

Product: Prefab House
Trademark:
Model(s): 6058*2438*2591 12190*2438*2591 5900*2250*2500 11800*2250*2500

Verification to: Standard: EN 1090-1:2009+A1:2011 related to CE Directives): 4 305/2011 (Regulation for the Marketing of Construction Products)

Remark: The product(s) has been verified on a voluntary basis. The product(s) fulfills the requirements of the Certification Mark of ECM, in reference to the technical data presented. The above Conformity Mark can be affixed on the product(s) accordingly to the ECM regulation about its release and its use. The registration capital fund of www.ecmcert.com. The Certificate of Compliance can be checked for validity at www.ecmcert.com. This verification does not imply assessment of the production of the product(s).

Additional information, clarification about the CE marking process is in place. Whereas the manufacturer is responsible to start the CE marking Certification Procedure through an appointed notified body and the payment of the necessary activities, as required by the Directive and accepted by the notified body, before placing the CE Mark on the product(s).

CE

Date of issue: 21 February 2023
Chief Manager:

Expiry date: 20 February 2025
Deputy Manager:

Ena Certification Macchine Srl
Via Cnr, 242 - Loc. Corallo di Sarnonico - 47023 Voltareggio (RC) - ITALY
☎ +39 051 4702114 ☎ +39 051 4702116 ✉ info@enacert.com ✉ www.enacert.com

CERTIFICATE

Quality Management System ISO 9001:2015

XINYU INTEGRATED HOUSING CO., LTD

Certificate No.: 24CN3458789Q

Unified social credit code: 91370112MA1UP726E

Registered Address: 1301 Room, Huajin Financial Center, Huaiyin District, Jinan City, Shandong Province, China.

Office Address: 1301 Room, Huajin Financial Center, Huaiyin District, Jinan City, Shandong Province, China.

Certification Scope: Sales and After-sales Technical Services of Prefabricated House and Related Supporting Facilities

IAF 2024
This is to certify that the quality management system established and implemented by the above organization meets the essential requirements.
During the validity period of the certificate, the surveillance audits should be carried out once a year and pass the audit. The certificate will continue to be valid.
The certificate can be checked out at the certification body website (www.acemchina.com) and CMAA website (www.cmaaq.com).

Date of first registration: 18/07/2024
Date of this certificate: 18/07/2024
Date of expiry: 08/07/2027

IAS ACCREDITED Management System Certification 1001:2015
IAF
General Manager:

ACM INTERNATIONAL CERTIFICATION LIMITED
31 Duxford Road, Ground Floor, 05041 Lymington, United Kingdom, W53 7AJ
Local Office: ACM (China) LIMITED, New York Building, 1500 JZ, Wenhua Road, Haining, Zhejiang 311109, China
T: +86 21-64383060 F: +86 21-64383066 W: www.acmchina.com E: info@acmcert.com

环境管理体系认证证书

证书编号: 0462RE12448R1M

获证组织: 山东新宇集成房屋有限公司
统一社会信用代码: 91370112MA1UP726E

环境管理体系符合: GB/T24001-2016 / ISO 14001:2015 标准

证书覆盖范围: 钢结构活动房屋的设计、生产(有国家专项要求的除外)及相关管理活动

注册地址/实际地址: 山东省济南市高新区经十路国际设计中心4号楼诚企壹壹创新中心1301

颁证日期: 2022-08-02
有效期至: 2025-08-01
监督审核日期: 2024-08-03

发证人:

中国合格评定国家认可委员会
CNAS COA88
管理体系
MANAGEMENT SYSTEM
认证中心
CNAS COA88

北京海德国际认证有限公司

CERTIFICATE

of conformity of the factory production control

No. 2435-CPR-8600914

In compliance with Regulation (EU) No. 305/2011 (CPR) of the European Parliament and of the Council of 9 March 2011 (the Construction Products Regulation or CPR) this certificate applies for the construction product:

Construction and assembly of steel building structures.

Execution class: R9E2
CE marking number: 8600914
Key word: steel structure building, externally insulated
Building process: verified data in the final report no. 8600914
Reference to the technical data in the final report no. 8600914
Authorized employees of approval: verified data in the final report no. 8600914

Based on the market under the name or trade mark of XinYu Integrated Housing Co., Ltd. (China) Prefabricated Center, Huaiyin District, Jinan City, Shandong Province, China and (produced in the manufacturing plant(s) of XinYu Integrated Housing Co., Ltd. (China) Prefabricated Center, Huaiyin District, Jinan City, Shandong Province, China.

This certificate attests that all provisions concerning the assessment and verification of conformity of performance prescribed in Annex A1 of the standard EN 1090-1:2009 + A1:2011 under the conditions for the performance set out in this certificate are applied and that:

EN 1090-1:2009 + A1:2011

Final product regulation verified is assessed to be in conformity with the applicable requirements.

This certificate was first issued on 07 May 2018 and will remain valid as long as the manufacturing conditions on the plant are monitored regularly, unless suspended or withdrawn by the notified factory production control certification body. The first certificate date of issue is 27th February 2015.

Issue: 07 May 2024
Validity codes: 604E470-008
China has validity of this certificate using this code at www.bvlab.de

www.bv-lab.net

LLC (Certification) Czech Republic s.r.o. | Pilsbátův 630/3, 186 00 Praha 8

The Advantages Of Apple Cabin

1. Combines the outdoor experience of camping with the tranquility of hotel and homestay.
2. Comfortable.
3. Customization, optional interior and layout.
4. The whole welding, solid and stable structure.
5. Suitable for couples or private cabins.
6. The whole shipment, decoration completed highly prefabricated, highly prefabricated, can be used on site by connecting to outdoor plumbing and electrical wiring.



02

Products

Product Model Showcase



Mini Booth



20ft



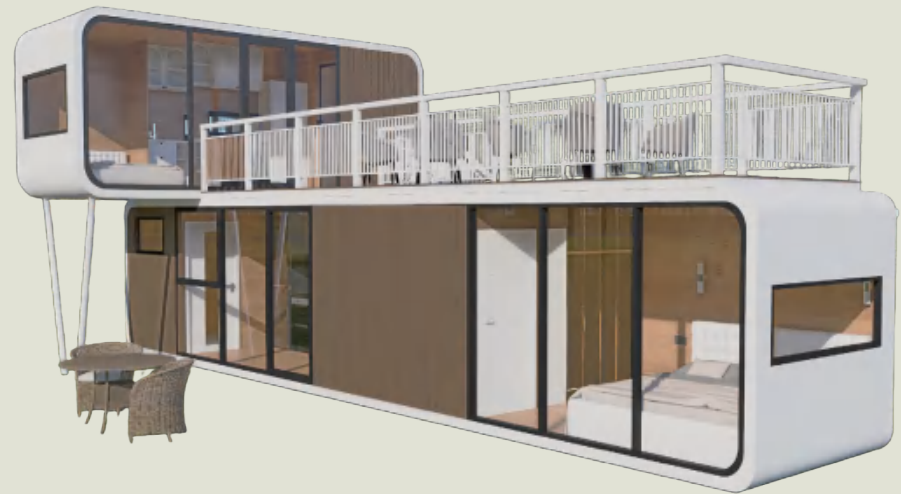
30ft



40ft



20ft-Two Story



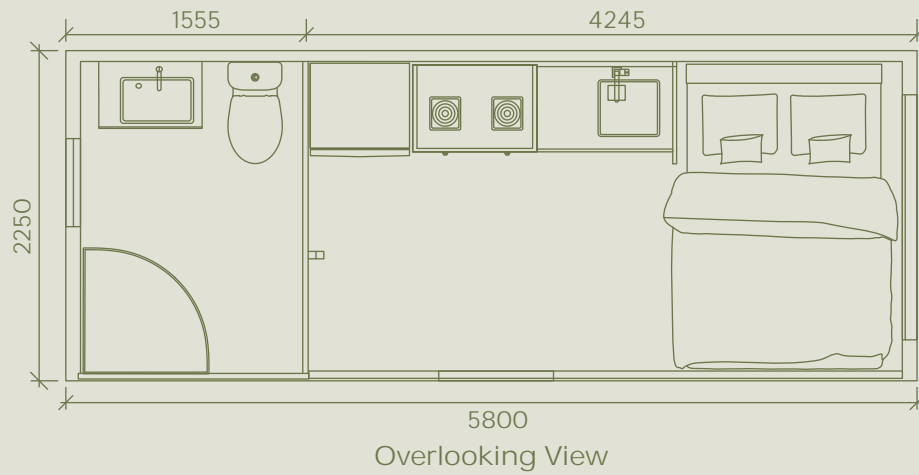
20ft And 40ft (Two Story)

The 20ft Apple Cabin



The 20ft Apple Cabin

Loading: 1*40HQ can load 2 sets Weight: 3500 KGS



The Technical Parameter-20ft

External dimensions.2250(W)*5800 (L)*2520 (H).20ft

Number of Floors: 1 floor

Designing Life-span: 20 years

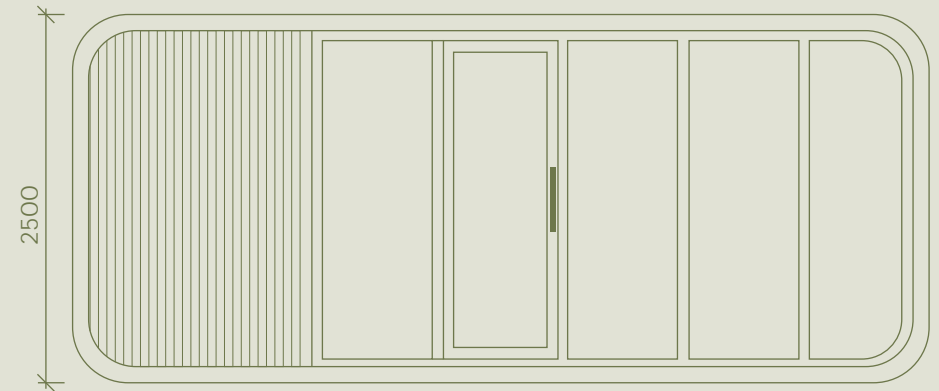
Floor loading:2.0KN/m²

Roof loading: 1.0KN/m²

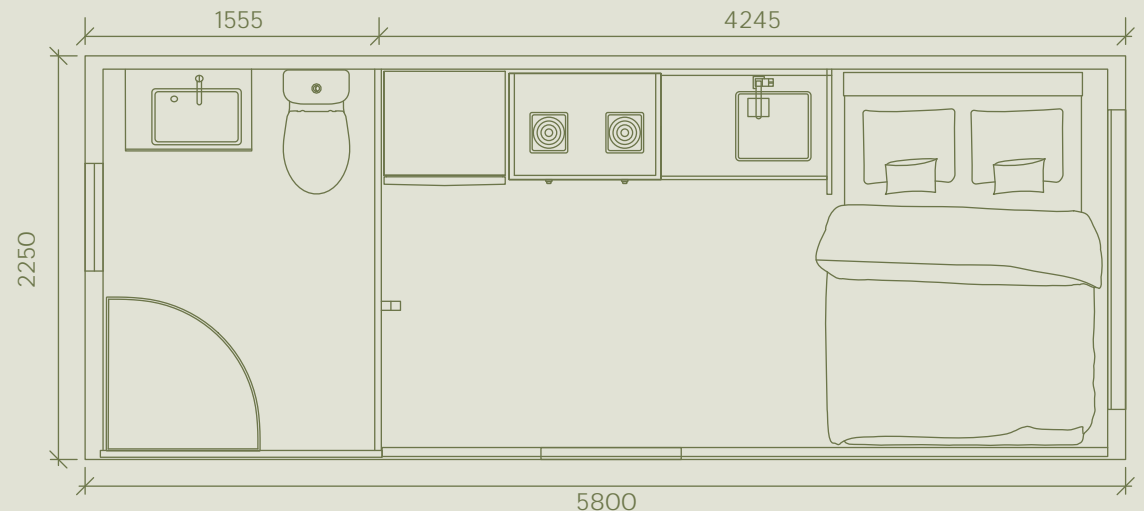
Wind loading: 0.5KN/m²

Snow loading: 0.5KN/m²

Seismic grade: 8



Front View



Overlooking View

The 20ft Apple Cabin-Exterior



The 20ft Apple Cabin-Interior



30ft Apple Cabin-A

Loading: 30HQ Can Load 1 Set
Weight: 6800KGS



30ft Apple Cabin-A

External dimensions:

2230 (W)*8950 (L)*2423 (H)-30ft

Roof Type:Natural drainage system

Number of Bedrooms:1

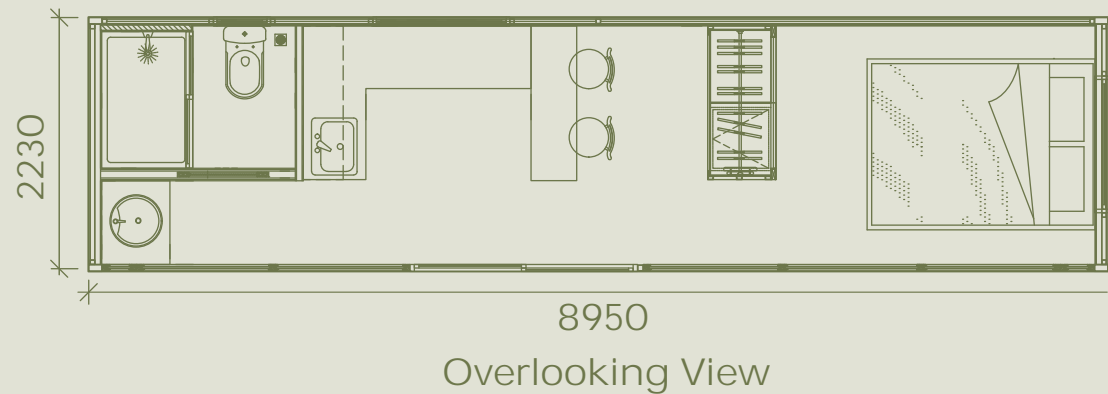
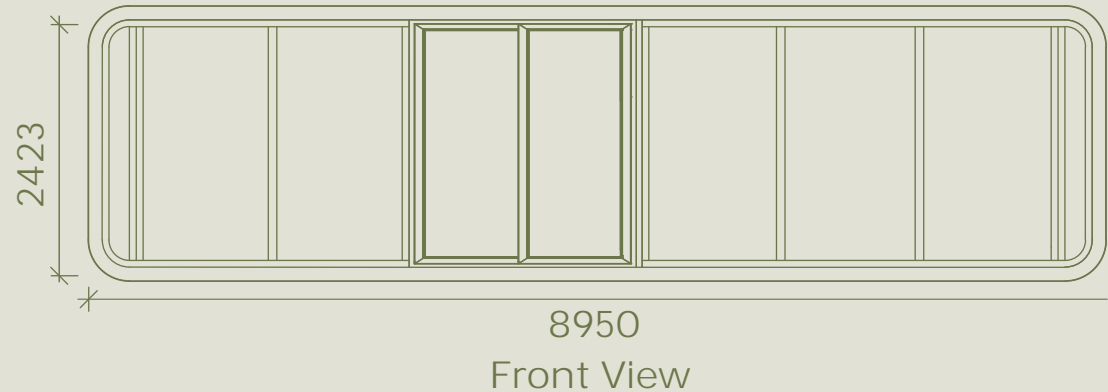
Designing Life-span: 20 years

Floor loading: 2.0KN/m²

Roof loading: 1.0KN/m²

Wind loading: 0.5KN/m²

Snow loading: 0.5KN/m²



30ft Apple Cabin-B

Loading: 30HQ Can Load 1 Set
Weight: 6800KGS



30ft Apple Cabin-B

External dimensions:

2230 (W)*8950 (L)*2793 (H)-30ft

Roof Type:Natural drainage system

Number of Bedrooms:1

Designing Life-span: 20 years

Floor loading: 2.0KN/m²

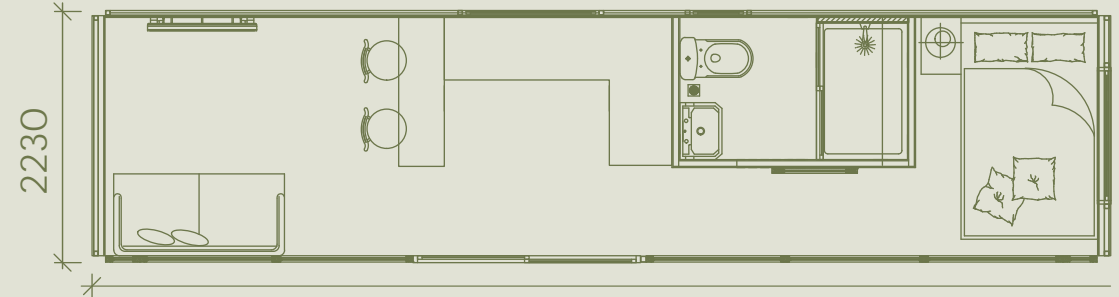
Roof loading: 1.0KN/m²

Wind loading: 0.5KN/m²

Snow loading: 0.5KN/m²



8950
Front View



8950
Overlooking View

40ft Apple Cabin-A

Loading: 40HQ Can Load 1 Set
Weight: 6800KGS



40ft Apple Cabin-A

External dimensions:

2250 (W)*11600 (L)*2500 (H)-40ft

Roof Type:Natural drainage system

Number of Bedrooms:1

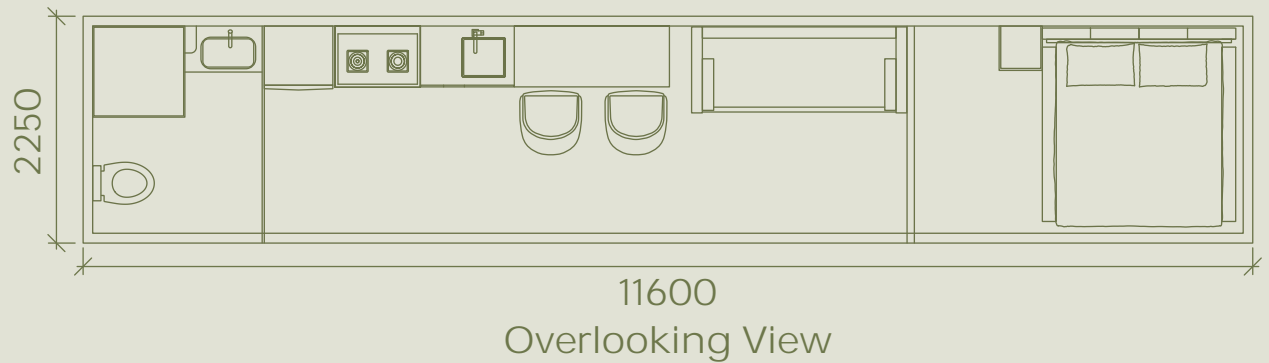
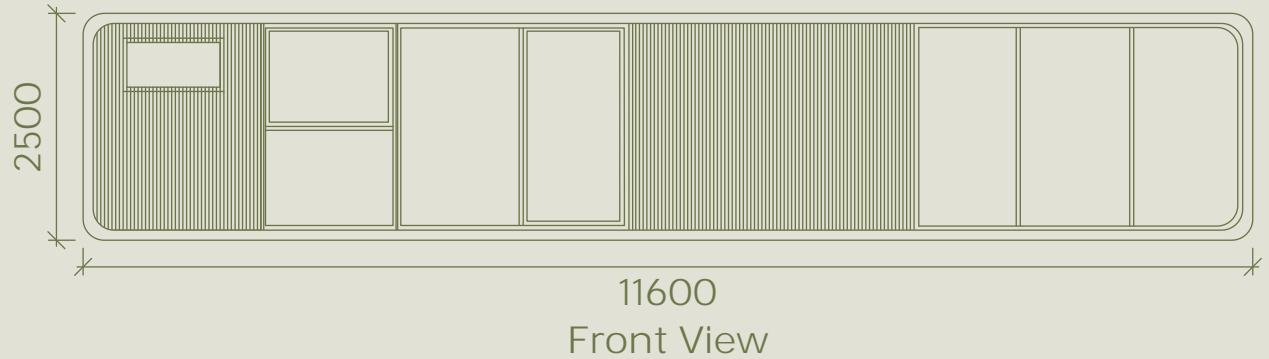
Designing Life-span: 20 years

Floor loading: 2.0KN/m²

Roof loading: 1.0KN/m²

Wind loading: 0.5KN/m²

Snow loading: 0.5KN/m²



40ft Apple Cabin-B

Loading: 40HQ Can Load 1 Set
Weight: 6800KGS



40ft Apple Cabin-B

External dimensions:2250 (W)

*11600 (L)*2520 (H)40ft

Roof Type:Natural drainage system

Number of Bedrooms:2

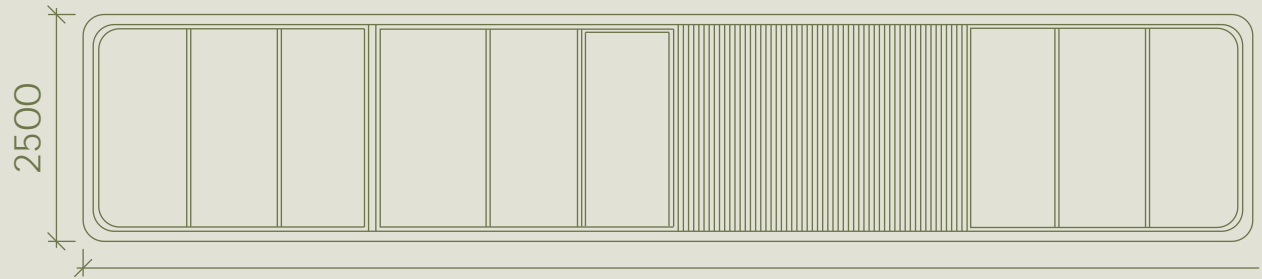
Designing Life-span: 20 years

Floor loading: 2.0KN/m²

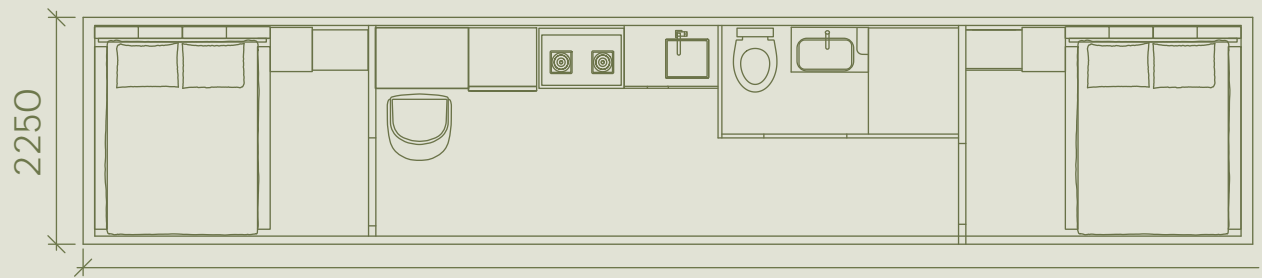
Roof loading: 1.0KN/m²

Wind loading: 0.5KN/m²

Snow loading: 0.5KN/m²



11600
Front View



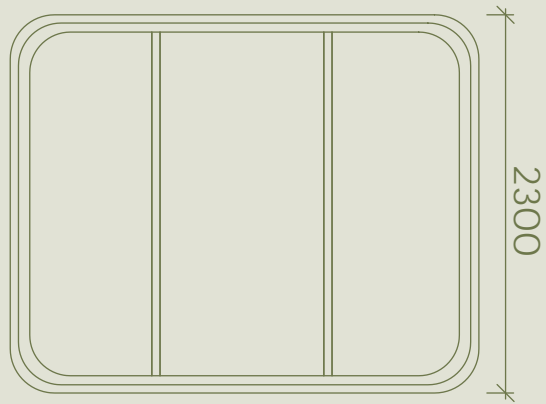
11600
Overlooking View

The 40ft Apple Cabin

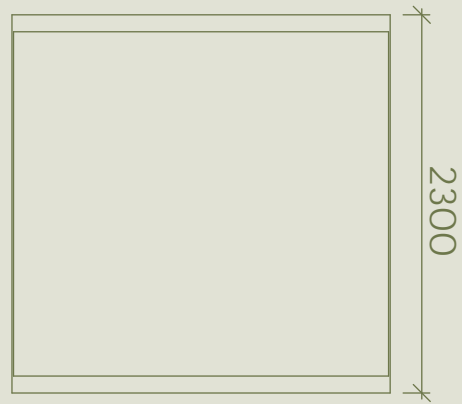


Mini Booth Tiny Cabin

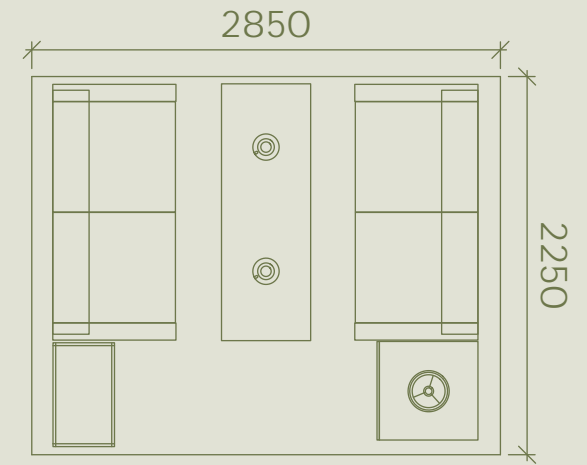
Loading: 1*40HQ can load 4 sets



Front View



Side View



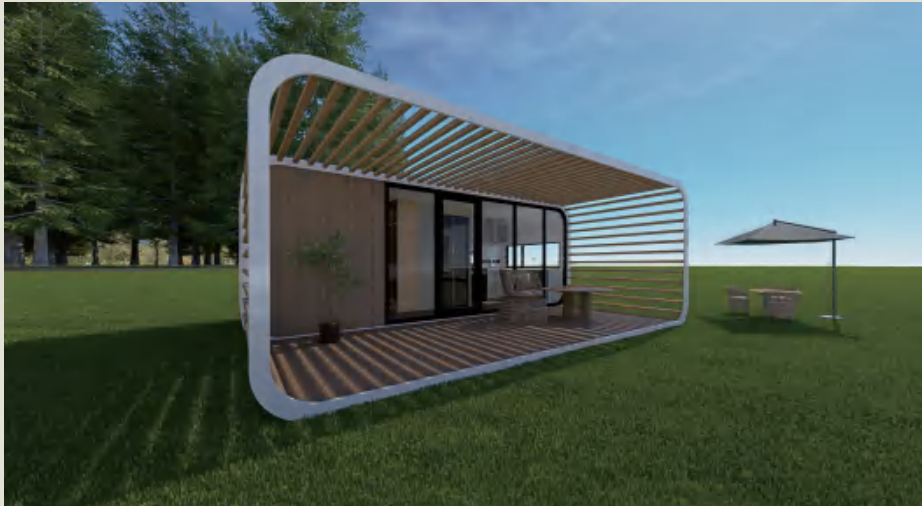
Plan



Mini Booth Tiny Cabin



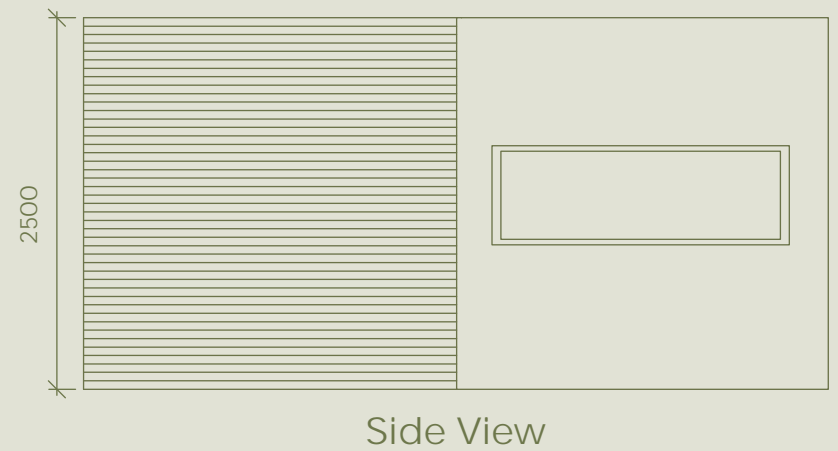
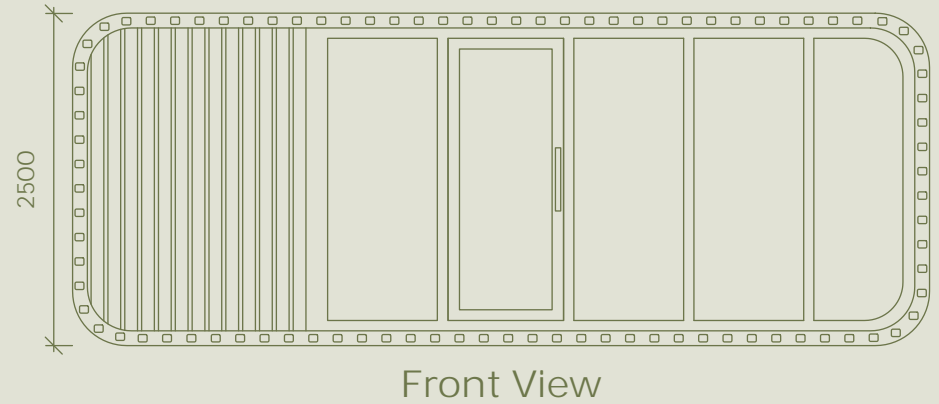
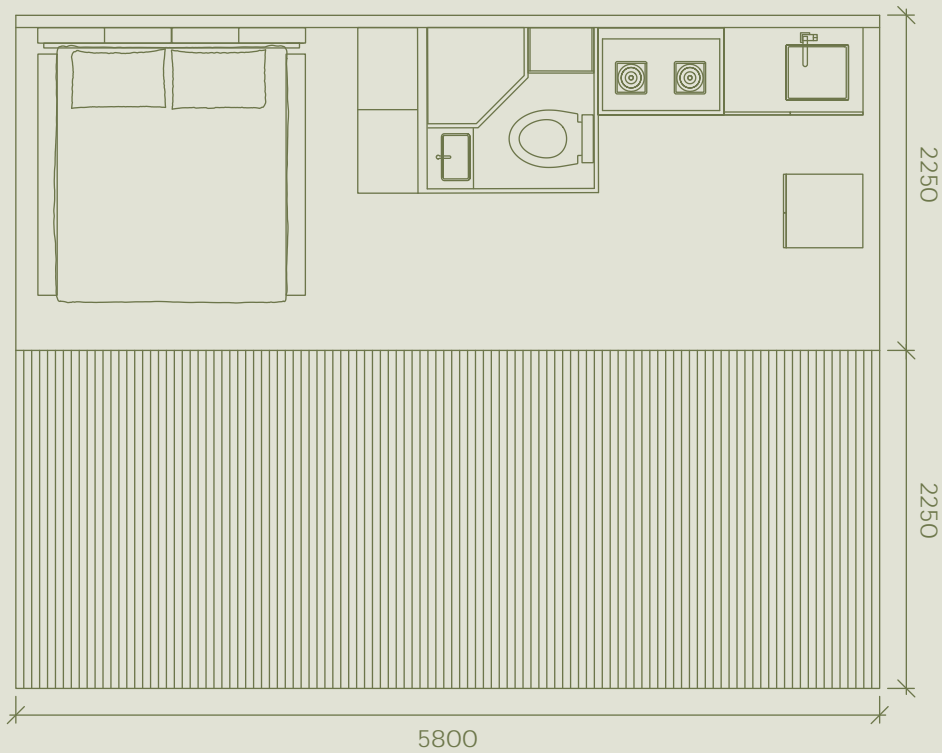
20ft With Terrace



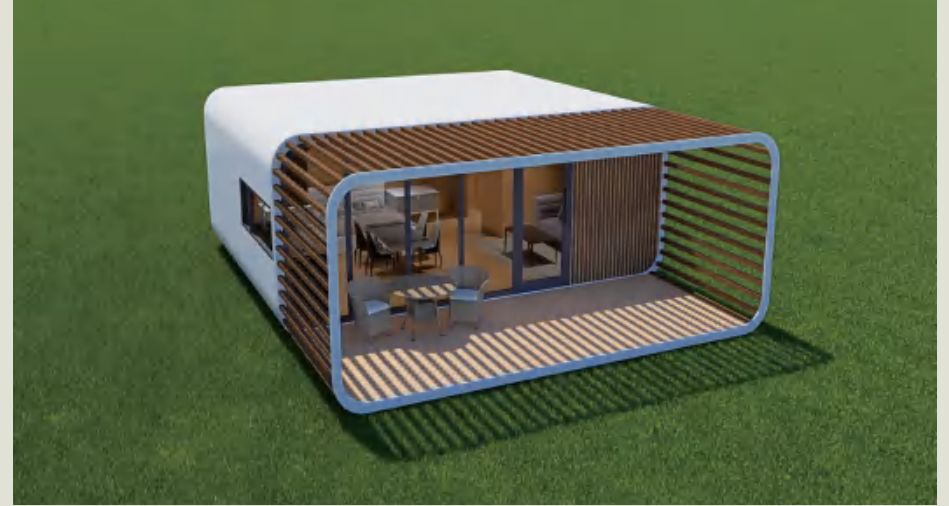
20ft With Terrace

Loading: 1*40HQ can load 1 sets

Weight: 4800KGS

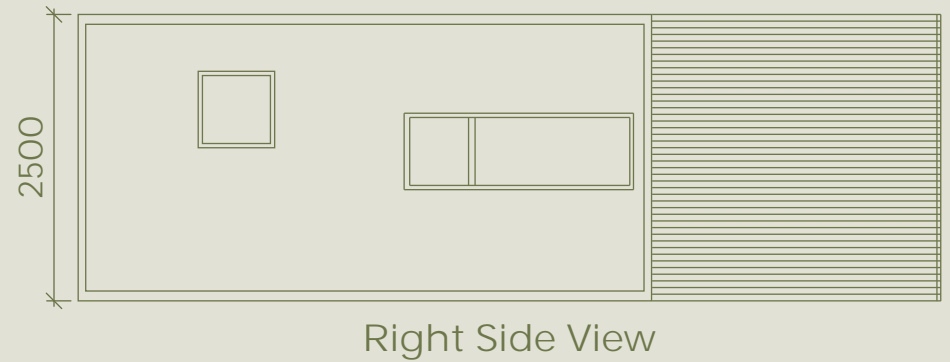
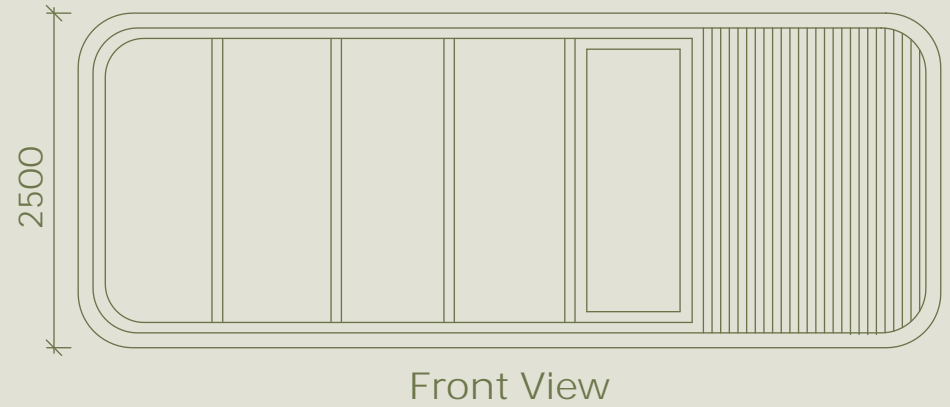
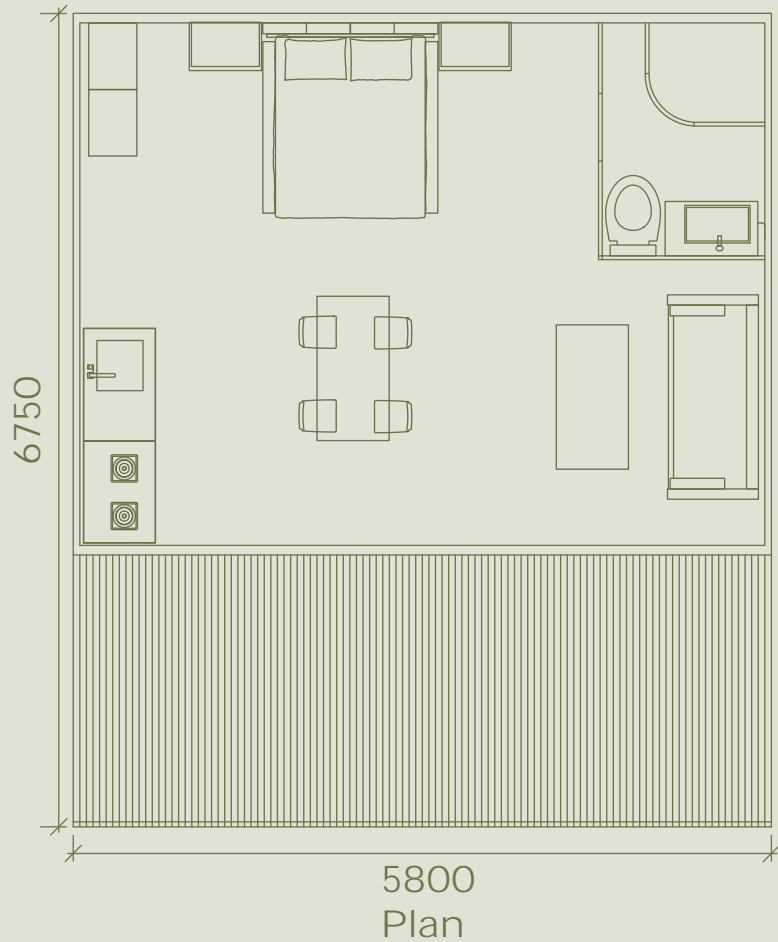


20ft- 2 Sets Connected With Terrace



20ft- 2 Sets Connected With Terrace

Loading: 2*40HQ can load 1 sets Weight: 9300KGS

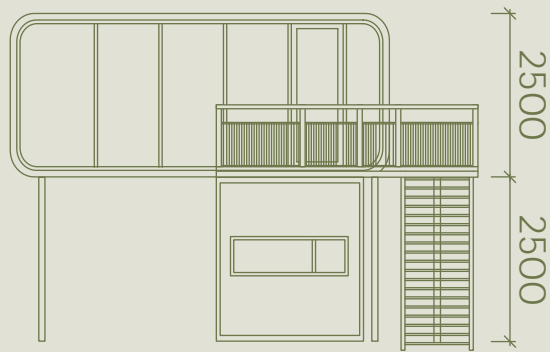


20ft-Two Story

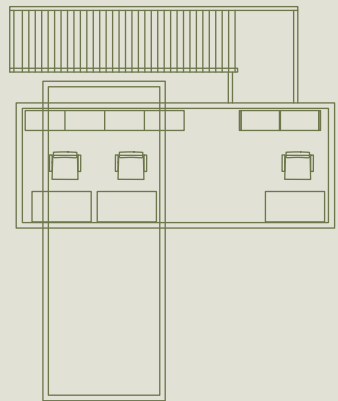


20ft-Two Story

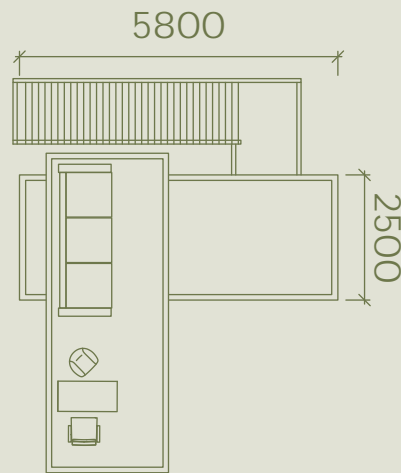
Loading: 1*40HQ can load 1 sets Weight: 7100KGS



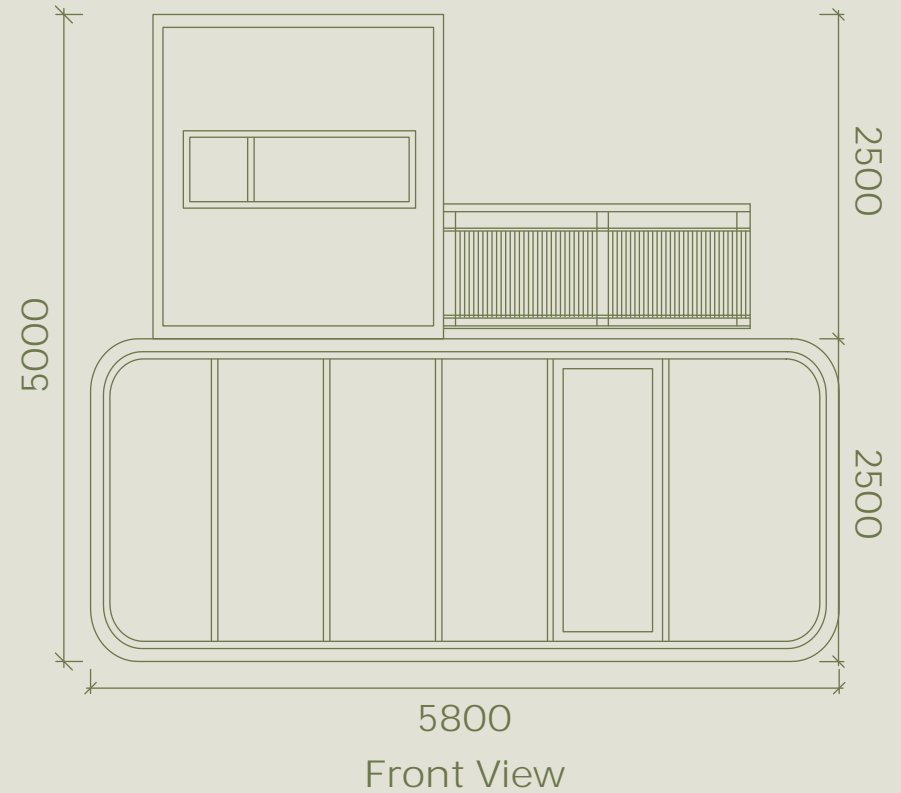
Side View



Ground Floor Plan



First Floor Plan



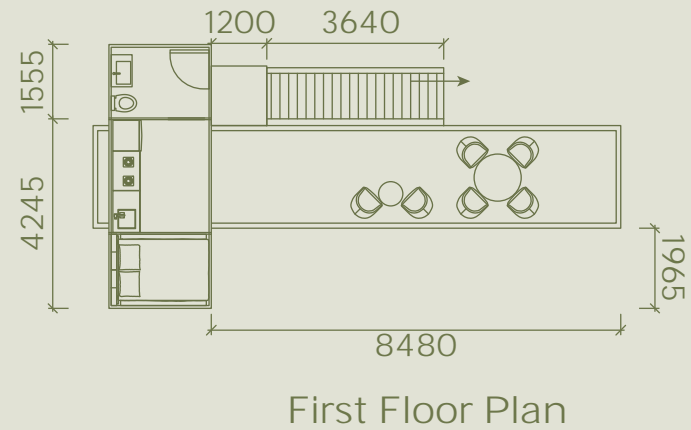
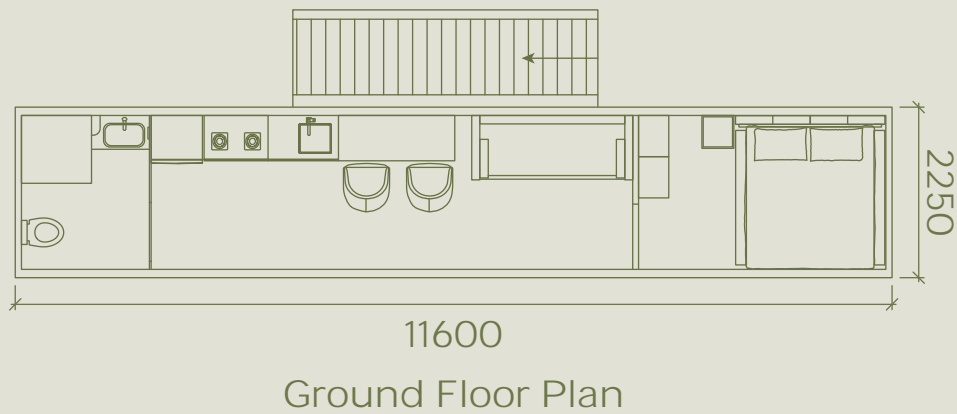
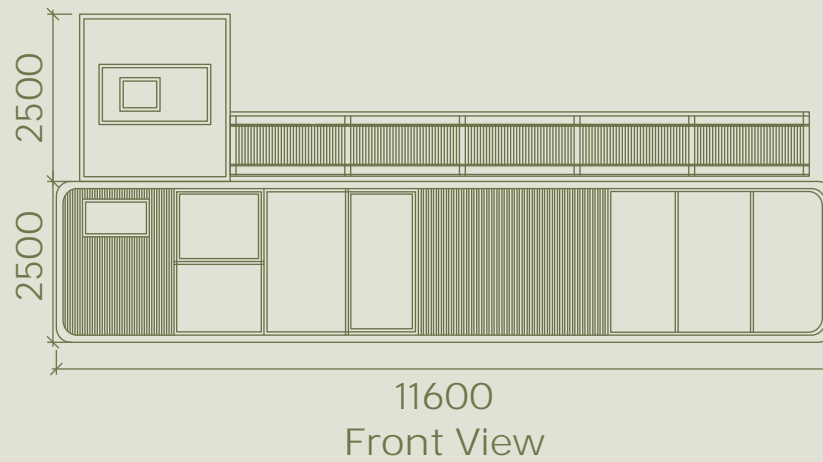
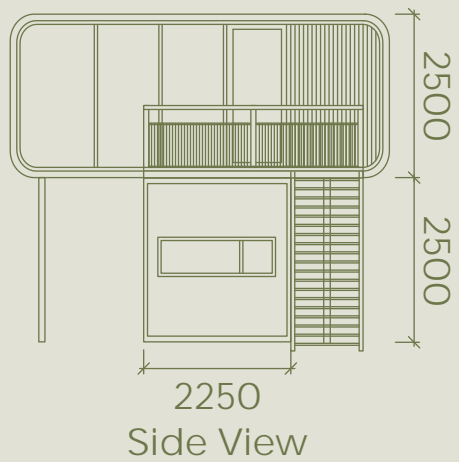
Front View

20ft And 40ft (Two Story)



20ft And 40ft (Two Story)

Loading: 2*40HQ can load 1 sets Weight: 10300KGS



Two Floors Cabin-actual








03

Accessories & Options

Apple Cabin Component

House Frame& Decoration	Main frame	Galvanized frame	
	External wall	1.6mm galvanized steel sheet	
	Internal wall decoration	9mm bamboo and wood fiber board&9mm OSB board	
	Floor decoration	4mm stone plastic locking floor	
Door And Window	Aluminum alloy 5mm+12A+5mm hollow low-e glass	W-1:1800*600 (external hanging window opening 600*400); W-2:2720*2225;W-9:900*400 (overhang)	

Apple Cabin Component

Indoor Electrical System for Room Lighting	lamps and lanterns		
	switch		
	socket		
	exhaust fan	250mm X 250mm	
	distribution box	Total control box 24 circuits	

Apple Cabin Component

Sanitary Wares	Toilet		
	Shower	900*900mm	
	Hardware for Bathroom	Towel rack,paper towel rack,tripod	
	Integrated washbasin Cabinetwith mirror cabinet	Black cabinet with white table top, 0.7m floor cabinet,mirror cabinet	
Cupboard		wall cupboard 1.5m,floor cupboard 1.5m	

04

Transportation

Package Of Transportation

We use bubble film to package the apple cabin, and multi-layer packaging ensure sthat the surface of the apple cabin will not be affected



Loading Of Transportation-20ft



Loading Of Transportation-40ft





Thank you!