



太空舱宣传册

CONTAINER HOUSE INTRODUCTION

目录

CONTENTS

01. 公司简介
COMPANY PROFILE

02. 产品概况
PRODUCT OVERVIEW

03. 05
PRODUCT INTRODUCTION

04. 06
PRODUCT INTRODUCTION

05. 07
PRODUCT INTRODUCTION

06. 09
PRODUCT INTRODUCTION

07. 02
PRODUCT INTRODUCTION

08. 08
PRODUCT INTRODUCTION

CONTENTS

PART ONE

产品概况

PRODUCT OVERVIEW



01



产品概况

PRODUCT OVERVIEW

D5



D9



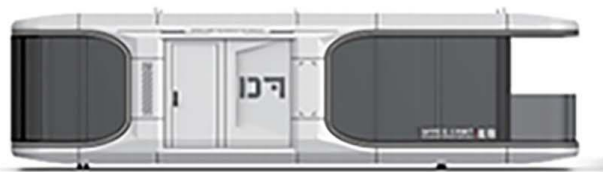
D6



D2



D7



D8



PART THREE

05介绍

PRODUCT INTRODUCTION

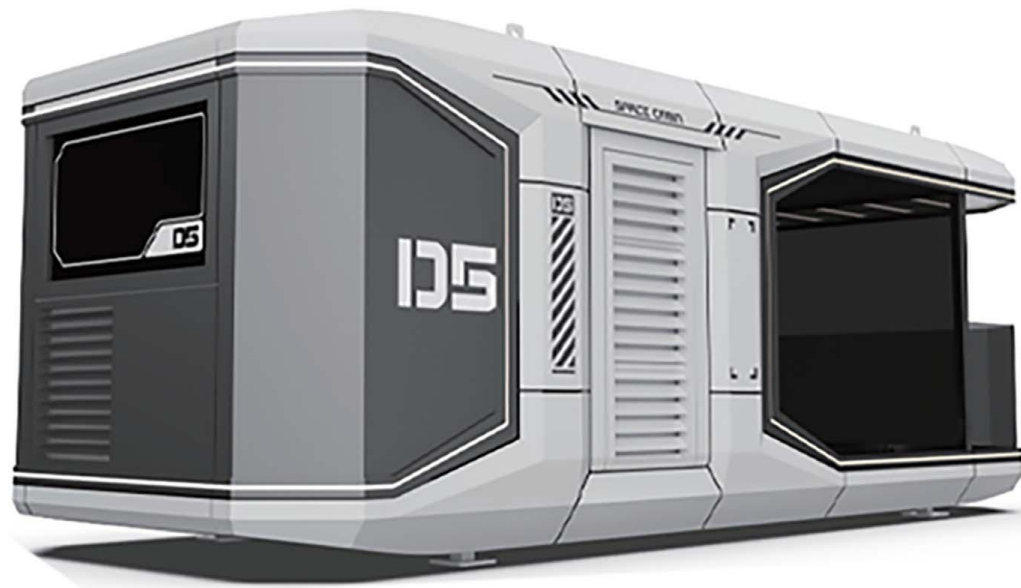


02



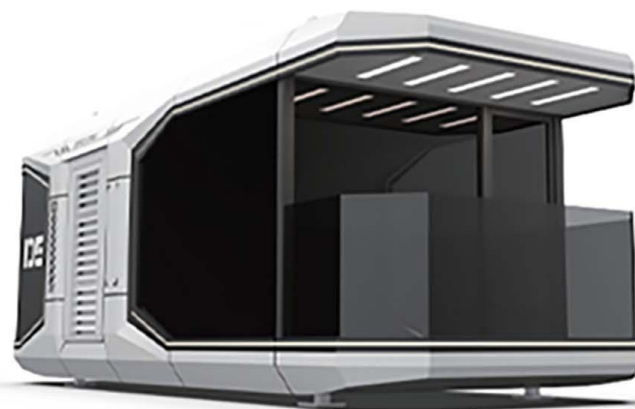
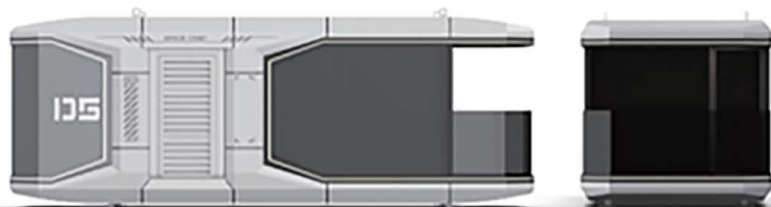
产品主图

PRODUCT PICTURE



D5

SPACE CAPSULE



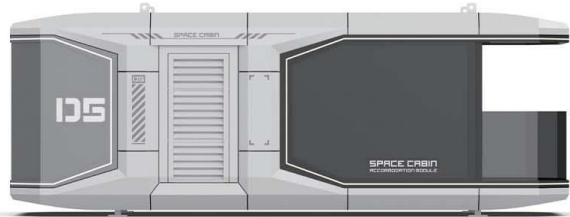


SPACE CAPSULE



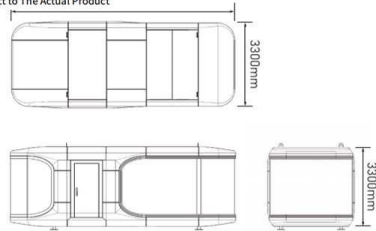
配置说明

CONFIGURATION INSTRUCTIONS

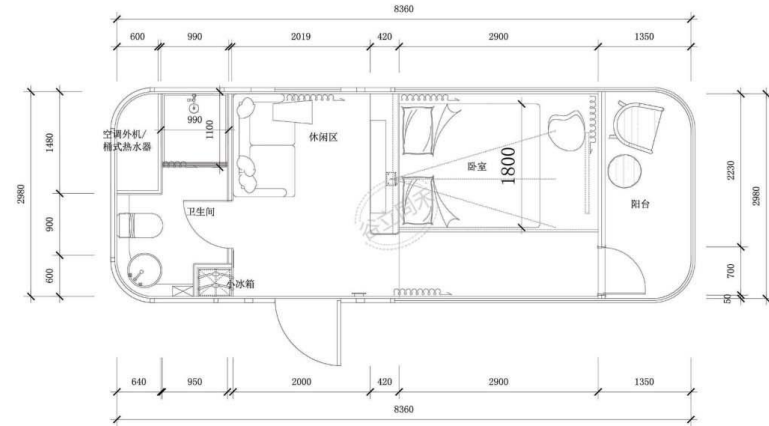


*以实物为准/Subject to The Actual Product

产品信息 (Configuration instructions)	
外形尺寸 Dimensions	8500mm*3300mm*3300mm
占地面积 Floor Area	28.4m ²
入住人数 Occupancy	2人
用电功率 Power consumption	12KW
约总重量 Approximate total weight	7吨



主体外结构 (Extracorporeal structure)		
No.	结构 (Structure)	材料 (Material)
1	钢结构框架 Steel structure frame	钢结构框架 Steel structure frame
2	外墙面板 Exterior wall panels	铝制 Aluminum
3	隔热保温 Heat insulation	100mm聚氨酯保温层 100mm polyurethane insulation layer
4	外墙玻璃 External wall glass	6+18A+6中空LOW-E玻璃或6+6夹胶隔热玻璃 6+18A+6 hollow LOW-E glass or 6+6 amine insulating glass
5	外壳表面处理 Shell surface treatment	金属氟碳漆烤漆 Metal fluorocarbon paint baking paint
6	阳台 Balcony	全景阳台(10mm钢化玻璃) Panoramic balcony (10mm tempered glass)
7	外围灯带 Peripheral light strip	外围灯带(环绕氛围灯带) Peripheral light strip (surrounding ambient light strip)
8	入户门 Entrance door	智能门禁系统 Intelligent access control system



舱内环保精装修 (Eco-friendly fine decoration inside Structural materials)		
No.	结构 (Structure)	材料 (Material)
9	天花板 Ceiling	可饰面一体板 Can be decorated with integrated board
10	墙面 Wall surface	可饰面一体板 Can be decorated with integrated board
11	地面 Floor	高级木纹锚扣地板 High-grade wood grain lock floor
12	室内灯效 Indoor lighting effect	3000K暖黄光 3000K warm yellow light
13	室外灯效 Outdoor lighting effect	4000K暖白光 4000K warm white light
14	指控系统 Control system	全屋集成智控系统 The whole house integrated intelligent control system
15	插座面板 Socket panel	品牌开关面板 Brand switch panel

全屋设备 (Whole house equipment)		
No.	结构 (Structure)	材料 (Material)
16	空调 Air conditioner	风管机 Ducted air conditioner
17	浴霸 Yuba	风暖式三合一集成浴霸 Air-heated three-in-one integrated bathroom

配置说明

CONFIGURATION INSTRUCTIONS

卫浴五金(Bathroom Fittings)		
No.	结构 (Structure)	材料 (Material)
18	卫生间隐私门 Bathroom privacy door	磨砂钢化玻璃 Frosted tempered glass
19	挂衣架毛巾架 Hanger Towel Rack	挂衣架毛巾架 Hanger Towel Rack
20	花洒 Shower	50L桶式热水器 50L bucket water heater
21	台盆 Basin	台上盆 Above counter basin
22	马桶 Toilet	智能马桶 Smart toilet
23	水龙头 Faucet	高脚水龙头 Tall faucet

其他配件(Other Accessories)	
No.	结构 (Structure)
24	运输固定件/连接件 Shipping Fixtures/Connectors

选配配件(Optional accessories)	
No.	结构 (Structure)
25	窗帘 Curtain
26	电动窗帘 Electric curtain
27	插卡通电/取卡断电 Plug in card power/take card power
28	地暖:电地暖 Floor heating: Electric floor heating
29	管道防冻:电伴热 Pipeline antifreeze: electric heat tracing
30	影音设备:投影仪 Audio-visual equipment: Projector
31	天窗 Skylight
32	循环换气系统 Circulation ventilation system
33	安全报警:烟感 Security alarm: smoke
34	多情景模式功能面板 Multi-scene mode function panel
35	照明智能控制 Intelligent lighting control
36	窗帘智能控制 Intelligent curtain control
37	智能语音系统 Intelligent voice system
38	酒店链接系统 Hotel link system







PART THREE

D6介绍

PRODUCT INTRODUCTION



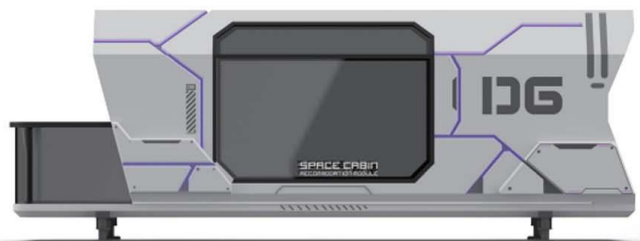
03



产品主图
PRODUCT PICTURE

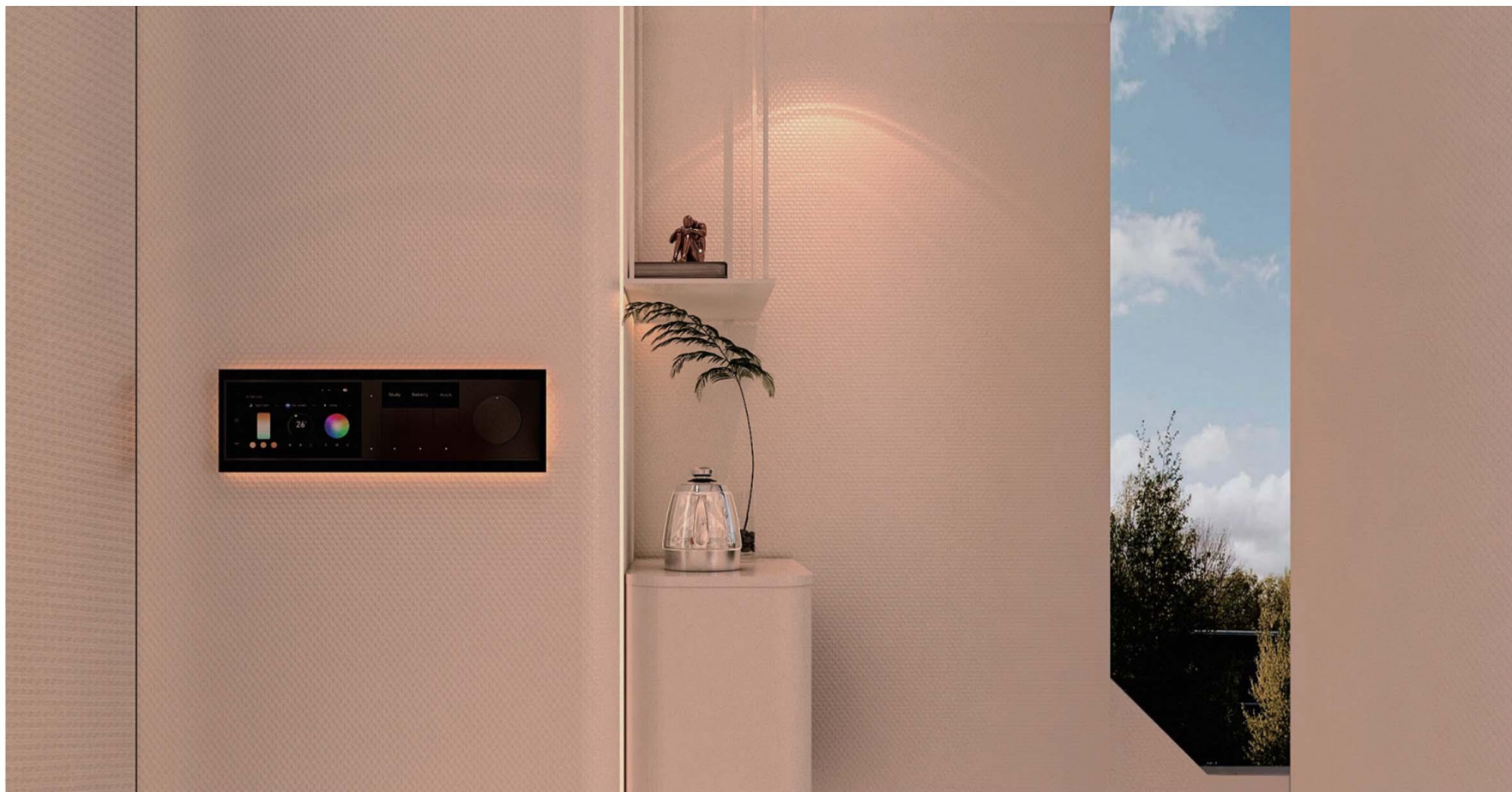


D6
SPACE CAPSULE



产品内饰

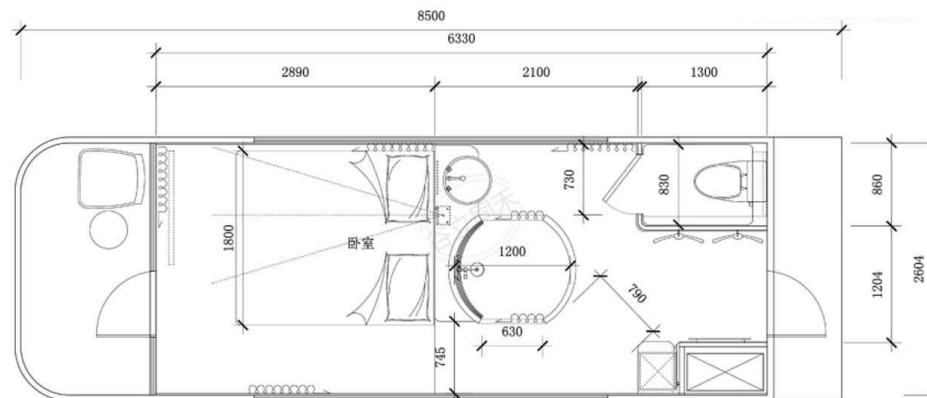
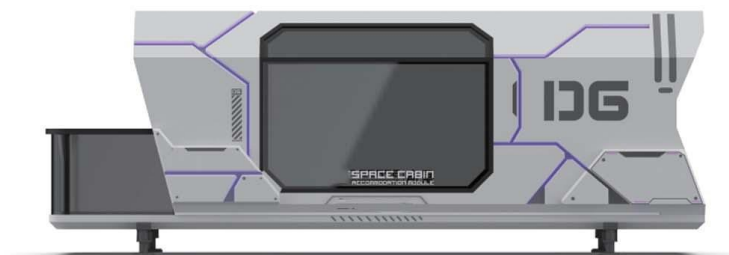
PRODUCT INTERIOR



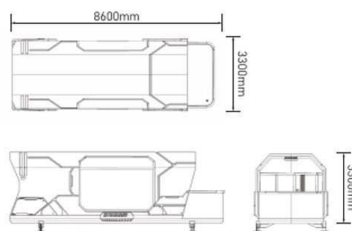


配置说明

CONFIGURATION INSTRUCTIONS



产品信息 (Configuration instructions)	
外形尺寸 Dimensions	8600mm*3300mm*3300mm
占地面积 Floor Area	28.4m ²
入住人数 Occupancy	2人
用电功率 Power consumption	12KW
约总重量 Approximate total weight	7吨



主体外结构 (Extracorporeal structure)		
No.	结构 (Structure)	材料 (Material)
1	钢结构框架 Steel structure frame	钢结构框架 Steel structure frame
2	外墙面板 Exterior wall panels	铝制 Aluminum
3	隔热保温 Heat insulation	100mm聚氨酯保温层 100mm polyurethane insulation layer
4	外墙玻璃 External wall glass	6+18A+6中空LOW-E玻璃或6+6夹胶断热玻璃 6+18A+6 hollow LOW-E glass or 6+6 amine insulating glass
5	外壳表面处理 Shell surface treatment	金属氟碳漆烤漆 Metal fluorocarbon paint baking paint
6	阳台 Balcony	全景阳台(10mm钢化玻璃) Panoramic balcony (10mm tempered glass)
7	外围灯带 Peripheral light strip	外围灯带(环绕氛围灯带) Peripheral light strip (surrounding ambient light strip)
8	入户门 Entrance door	智能门禁系统 Intelligent access control system

舱内环保精装修 (Eco-friendly fine decoration inside Structural materials)		
No.	结构 (Structure)	材料 (Material)
9	天花板 Ceiling	可饰面一体板 Can be decorated with integrated board
10	墙面 Wall surface	可饰面一体板 Can be decorated with integrated board
11	地面 Floor	高级木纹锁扣地板 High-grade wood grain lock floor
12	室内灯效 Indoor lighting effect	3000K暖黄光 3000K warm yellow light
13	室外灯效 Outdoor lighting effect	4000K暖白光 4000K warm white light
14	指控系统 Control system	全屋集成智控系统 The whole house integrated intelligent control system
15	插座面板 Socket panel	品牌开关面板 Brand switch panel

全屋设备 (Whole house equipment)		
No.	结构 (Structure)	材料 (Material)
16	空调 Air conditioner	风管机 Ducted air conditioner
17	浴霸 Yuba	风暖式三合一集成浴霸 Air-heated three-in-one integrated bathroom

配置说明

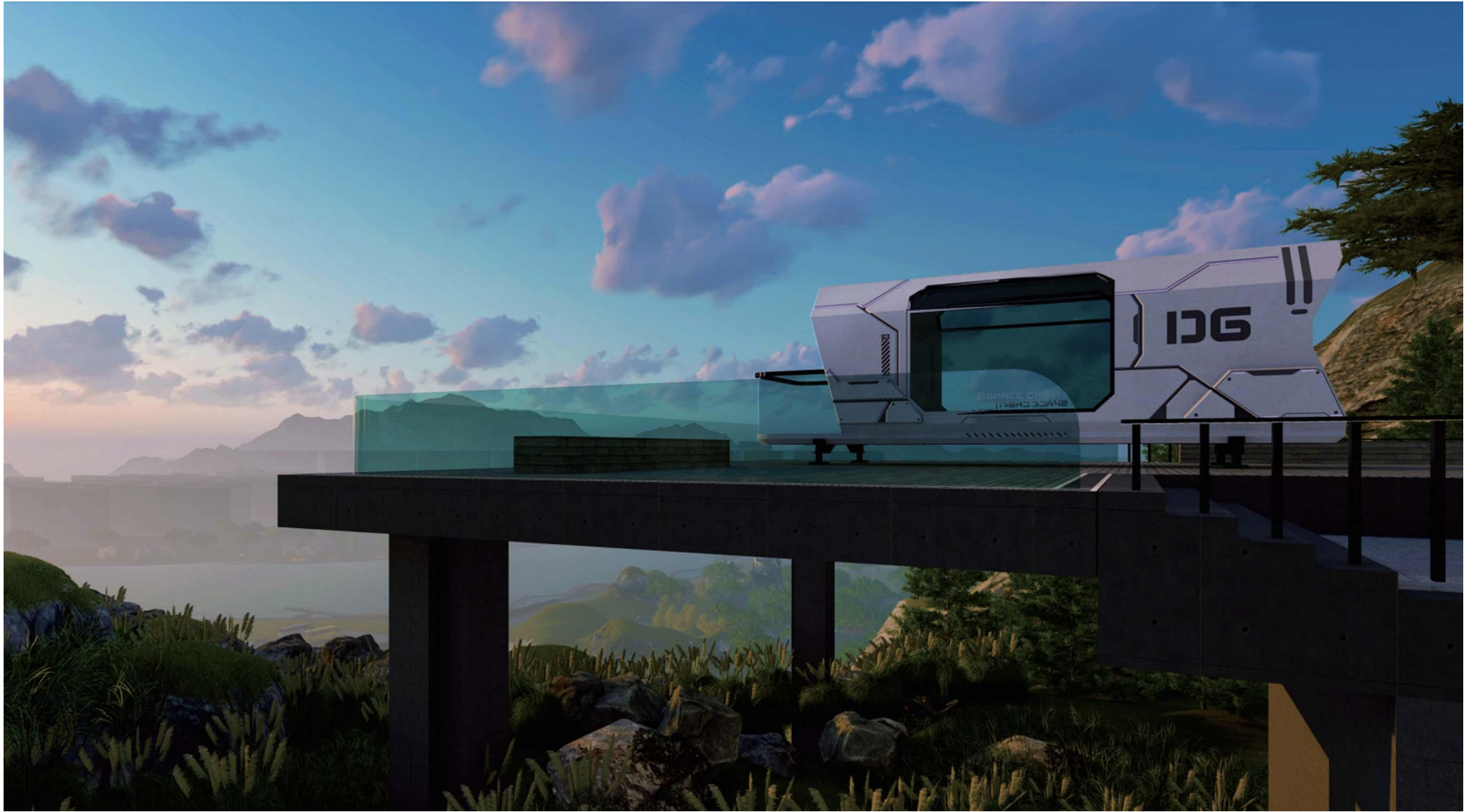
CONFIGURATION INSTRUCTIONS

卫浴五金(Bathroom Fittings)		
No.	结构 (Structure)	材料 (Material)
18	卫生间隐私门 Bathroom privacy door	磨砂钢化玻璃 Frosted tempered glass
19	挂衣架毛巾架 Hanger Towel Rack	挂衣架毛巾架 Hanger Towel Rack
20	花洒 Shower	50L桶式热水器 50L bucket water heater
21	台盆 Basin	台上盆 Above counter basin
22	马桶 Toilet	智能马桶 Smart toilet
23	水龙头 Faucet	高脚水龙头 Tall faucet

其他配件(Other Accessories)	
No.	结构 (Structure)
24	运输固定件/连接件 Shipping Fixtures/Connectors

选配配件(Optional accessories)			
No.	结构 (Structure)	No.	结构 (Structure)
25	窗帘 Curtain	32	循环换气系统 Circulation ventilation system
26	电动窗帘 Electric curtain	33	安全报警:烟感 Security alarm: smoke
27	插卡通电/取卡通电 Plug in card power/take card power	34	多情景模式功能面板 Multi-scene mode function panel
28	地暖:电地暖 Floor heating: Electric floor heating	35	照明智能控制 Intelligent lighting control
29	管道防冻:电伴热 Pipeline antifreeze: electric heat tracing	36	窗帘智能控制 Intelligent curtain control
30	影音设备:投影仪 Audio-visual equipment: Projector	37	智能语音系统 Intelligent voice system
31	天窗 Skylight	38	酒店链接系统 Hotel link system







PART FOUR

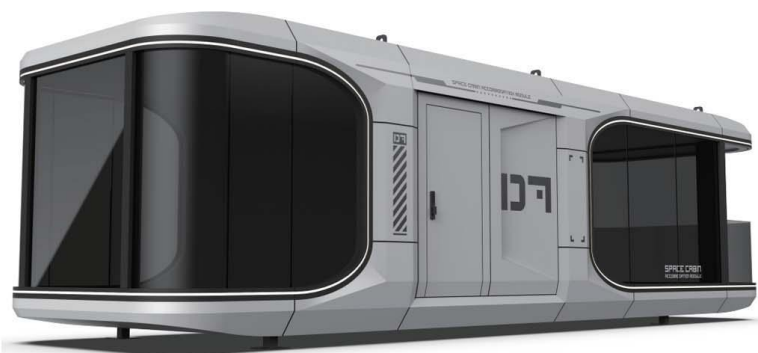
07介绍

PRODUCT INTRODUCTION



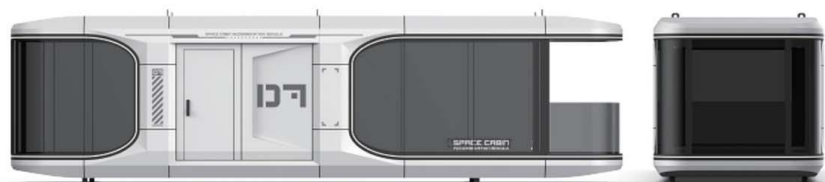
产品主图

PRODUCT PICTURE



D7

SPACE CAPSULE



产品内饰

PRODUCT INTERIOR



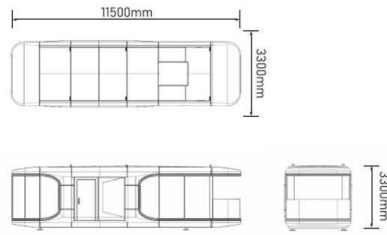


配置说明

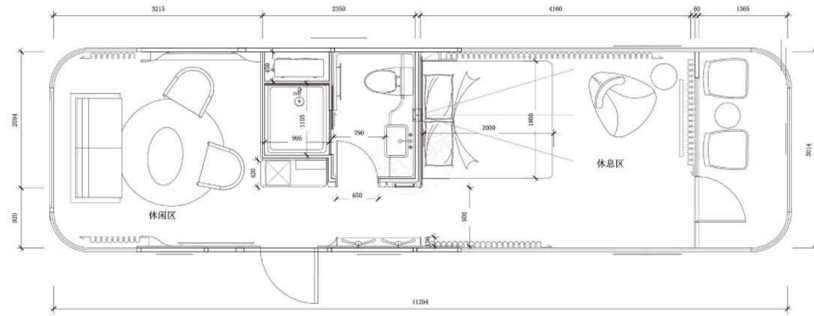
CONFIGURATION INSTRUCTIONS



产品信息 (Configuration instructions)	
外形尺寸 Dimensions	11500mm*3300mm*3300mm
占地面积 Floor Area	38m ²
入住人数 Occupancy	2人
用电功率 Power consumption	12KW
约总重量 Approximate total weight	9吨



主体外结构 (Extracorporeal structure)		
No.	结构 (Structure)	材料 (Material)
1	钢结构框架 Steel structure frame	钢结构框架 Steel structure frame
2	外墙面板 Exterior wall panels	铝制 Aluminum
3	隔热保温 Heat insulation	100mm聚氨酯保温层 100mm polyurethane insulation layer
4	外墙玻璃 External wall glass	6+18A+6中空LOW-E玻璃或6+6夹胶隔热玻璃 6+18A+6 hollow LOW-E glass or 6+6 amine insulating glass
5	外壳表面处理 Shell surface treatment	金属氟碳漆烤漆 Metal fluorocarbon paint baking paint
6	阳台 Balcony	全景阳台(10mm钢化玻璃) Panoramic balcony (10mm tempered glass)
7	外围灯带 Peripheral light strip	外围灯带(环绕氛围灯带) Peripheral light strip (surrounding ambient light strip)
8	入户门 Entrance door	智能门禁系统 Intelligent access control system



舱内环保精装修 (Eco-friendly fine decoration inside Structural materials)		
No.	结构 (Structure)	材料 (Material)
9	天花板 Ceiling	可饰面一体板 Can be decorated with integrated board
10	墙面 Wall surface	可饰面一体板 Can be decorated with integrated board
11	地面 Floor	高级木纹锁扣地板 High-grade wood grain lock floor
12	室内灯效 Indoor lighting effect	3000K暖黄光 3000K warm yellow light
13	室外灯效 Outdoor lighting effect	4000K暖白光 4000K warm white light
14	指控系统 Control system	全屋集成智控系统 The whole house integrated intelligent control system
15	插座面板 Socket panel	品牌开关面板 Brand switch panel

全屋设备 (Whole house equipment)		
No.	结构 (Structure)	材料 (Material)
16	空调 Air conditioner	风管机 Ducted air conditioner
17	浴霸 Yuba	风暖式三合一集成浴霸 Air-heated three-in-one integrated bathroom

配置说明

CONFIGURATION INSTRUCTIONS

卫浴五金(Bathroom Fittings)		
No.	结构 (Structure)	材料 (Material)
18	卫生间隐私门 Bathroom privacy door	磨砂钢化玻璃 Frosted tempered glass
19	挂衣架毛巾架 Hanger Towel Rack	挂衣架毛巾架 Hanger Towel Rack
20	花洒 Shower	50L桶式热水器 50L bucket water heater
21	台盆 Basin	台上盆 Above counter basin
22	马桶 Toilet	智能马桶 Smart toilet
23	水龙头 Faucet	高脚水龙头 Tall faucet

其他配件(Other Accessories)	
No.	结构 (Structure)
24	运输固定件/连接件 Shipping Fixtures/Connectors

选配配件(Optional accessories)			
No.	结构 (Structure)	No.	结构 (Structure)
25	窗帘 Curtain	32	循环换气系统 Circulation ventilation system
26	电动窗帘 Electric curtain	33	安全报警:烟感 Security alarm: smoke
27	插卡通电/取卡通电 Plug in card power/take card power	34	多情景模式功能面板 Multi-scene mode function panel
28	地暖:电地暖 Floor heating: Electric floor heating	35	照明智能控制 Intelligent lighting control
29	管道防冻:电伴热 Pipeline antifreeze: electric heat tracing	36	窗帘智能控制 Intelligent curtain control
30	影音设备:投影仪 Audio-visual equipment: Projector	37	智能语音系统 Intelligent voice system
31	天窗 Skylight	38	酒店链接系统 Hotel link system







PART FIVE

09介绍

PRODUCT INTRODUCTION



05



产品主图

PRODUCT PICTURE



产品内饰

PRODUCT INTERIOR



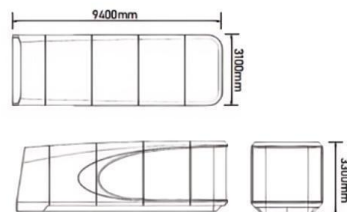


配置说明

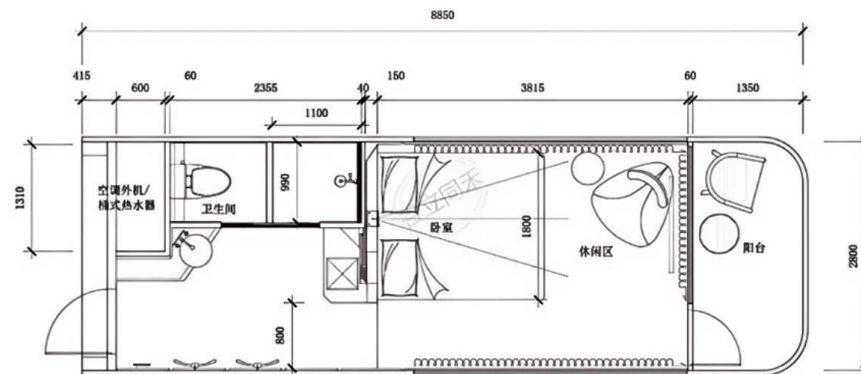
CONFIGURATION INSTRUCTIONS



产品信息 (Configuration instructions)	
外形尺寸 Dimensions	9400mm*3100mm*3300mm
占地面积 Floor Area	29.7m ²
入住人数 Occupancy	2人
用电功率 Power consumption	12KW
约总重量 Approximate total weight	8吨



主体外结构 (Extracorporeal structure)		
No.	结构 (Structure)	材料 (Material)
1	钢结构框架 Steel structure frame	钢结构框架 Steel structure frame
2	外墙面板 Exterior wall panels	铝制 Aluminum
3	隔热保温 Heat insulation	100mm聚氨酯保温层 100mm polyurethane insulation layer
4	外墙玻璃 External wall glass	6+18A+6中空LOW-E玻璃或6+6夹胶断桥玻璃 6+18A+6 hollow LOW-E glass or 6+6 amine insulating glass
5	外壳表面处理 Shell surface treatment	金属氟碳漆烤漆 Metal fluorocarbon paint baking paint
6	阳台 Balcony	全景阳台(10mm钢化玻璃) Panoramic balcony (10mm tempered glass)
7	外围灯带 Peripheral light strip	外围灯带(环绕氛围灯带) Peripheral light strip (surrounding ambient light strip)
8	入户门 Entrance door	智能门禁系统 Intelligent access control system

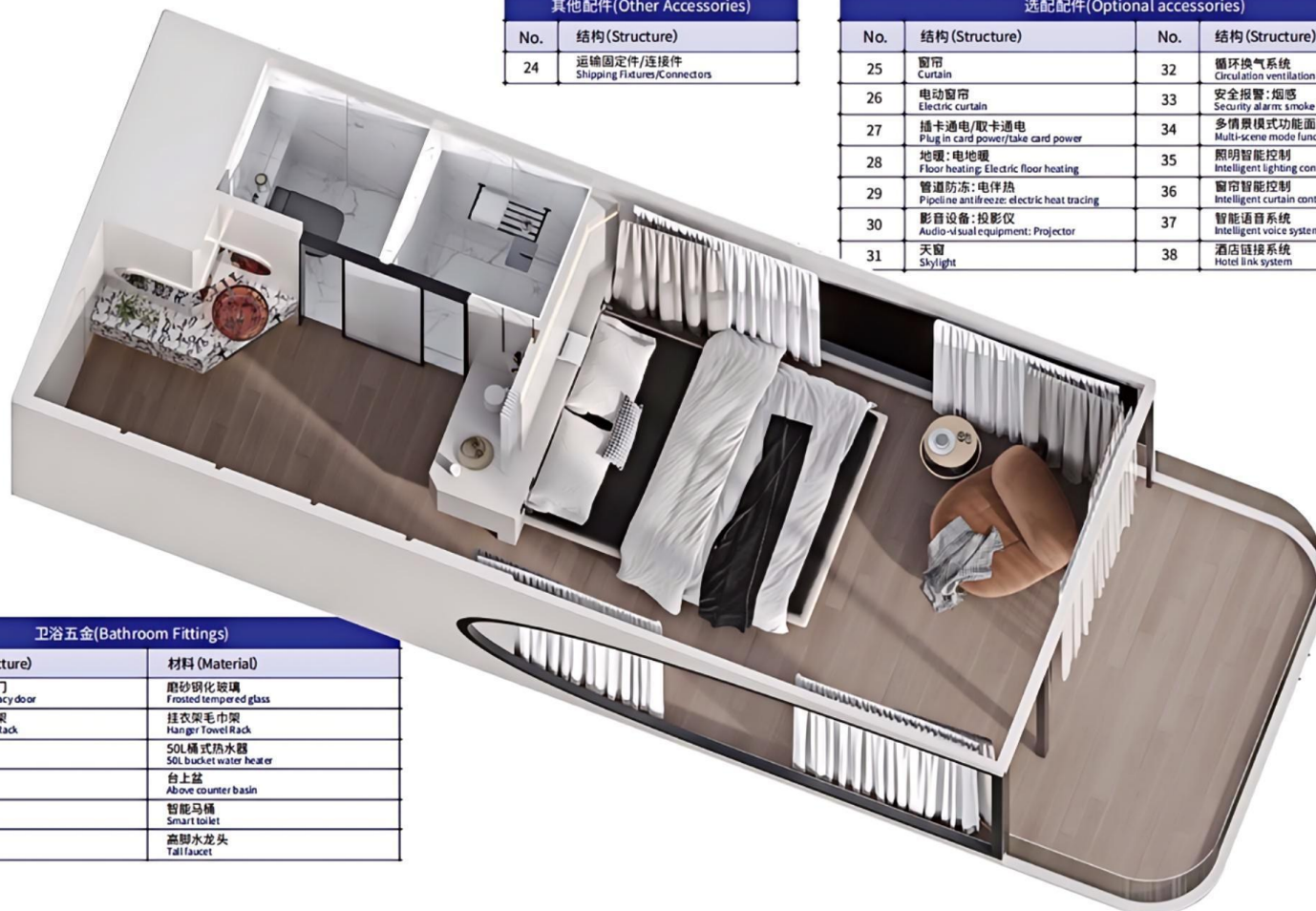


舱内环保精装修 (Eco-friendly fine decoration inside Structural materials)		
No.	结构 (Structure)	材料 (Material)
9	天花板 Ceiling	可饰面一体板 Can be decorated with integrated board
10	墙面 Wall surface	可饰面一体板 Can be decorated with integrated board
11	地面 Floor	高级木纹锁扣地板 High-grade wood grain lock floor
12	室内灯效 Indoor lighting effect	3000K暖黄光 3000K warm yellow light
13	室外灯效 Outdoor lighting effect	4000K暖白光 4000K warm white light
14	指控系统 Control system	全屋集成智控系统 The whole house in tegrated intelligent control system
15	插座面板 Socket panel	品牌开关面板 Brand switch panel

全屋设备 (Whole house equipment)		
No.	结构 (Structure)	材料 (Material)
16	空调 Air conditioner	风管机 Ducted air conditioner
17	浴霸 Yuba	风暖式三合一集成浴霸 Air-heated three-in-one integrated bathroom

配置说明

CONFIGURATION INSTRUCTIONS



其他配件(Other Accessories)	
No.	结构(Structure)
24	运输固定件/连接件 Shipping Fixtures/Connectors

选配配件(Optional accessories)			
No.	结构(Structure)	No.	结构(Structure)
25	窗帘 Curtain	32	循环换气系统 Circulation ventilation system
26	电动窗帘 Electric curtain	33	安全报警: 烟感 Security alarm: smoke
27	插卡通电/取卡通电 Plug in card power/take card power	34	多情景模式功能面板 Multi-scene mode function panel
28	地暖: 电地暖 Floor heating: Electric floor heating	35	照明智能控制 Intelligent lighting control
29	管道防冻: 电伴热 Pipeline antifreeze: electric heat tracing	36	窗帘智能控制 Intelligent curtain control
30	影音设备: 投影仪 Audio-visual equipment: Projector	37	智能语音系统 Intelligent voice system
31	天窗 Skylight	38	酒店链接系统 Hotel link system

卫浴五金(Bathroom Fittings)		
No.	结构(Structure)	材料(Material)
18	卫生间隐私门 Bathroom privacy door	磨砂钢化玻璃 Frosted tempered glass
19	挂衣架毛巾架 Hanger Towel Rack	挂衣架毛巾架 Hanger Towel Rack
20	花洒 Shower	50L桶式热水器 50L bucket water heater
21	台盆 Basin	台上盆 Above counter basin
22	马桶 Toilet	智能马桶 Smart toilet
23	水龙头 Faucet	高脚水龙头 Tall faucet





01

X-Inspace

Science fiction-like life
Technology inspiration Beyond time and space
Technology / Intelligent caravan

SPACE COBIN

PART SIX

产品介绍

PRODUCT INTRODUCTION



产品主图

PRODUCT PICTURE

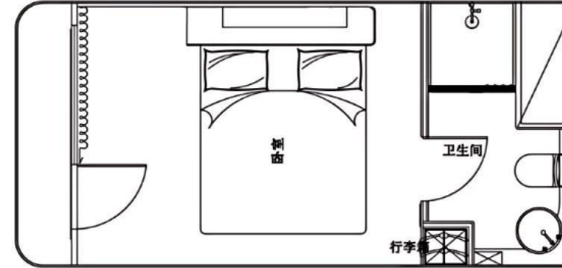


D2

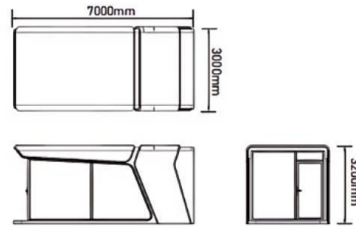
SPACE CAPSULE

配置说明

CONFIGURATION INSTRUCTIONS



产品信息 (Configuration instructions)	
外形尺寸 Dimensions	7000mm*3000mm*3200mm
占地面积 Floor Area	22.4m ²
入住人数 Occupancy	2人
用电功率 Power consumption	12KW
约总重量 Approximate total weight	6吨



主体外结构 (Extracorporeal structure)		
No.	结构 (Structure)	材料 (Material)
1	钢结构框架 Steel structure frame	钢结构框架 Steel structure frame
2	外墙面板 Exterior wall panels	铝制 Aluminum
3	隔热保温 Heat insulation	100mm聚氨酯保温层 100mm polyurethane insulation layer
4	外墙玻璃 External wall glass	6+18A+6中空LOW-E玻璃或6+6夹胶隔热玻璃 6+18A+6 hollow LOW-E glass or 6+6 amine insulating glass
5	外壳表面处理 Shell surface treatment	金属氟碳漆烤漆 Metal fluorocarbon paint baking paint
6	阳台 Balcony	全景阳台(10mm钢化玻璃) Panoramic balcony (10mm tempered glass)
7	外围灯带 Peripheral light strip	外围灯带(环绕氛围灯带) Peripheral light strip (surrounding ambient light strip)
8	入户门 Entrance door	智能门禁系统 Intelligent access control system

舱内环保精装修 (Eco-friendly fine decoration inside Structural materials)		
No.	结构 (Structure)	材料 (Material)
9	天花板 Ceiling	可饰面一体板 Can be decorated with integrated board
10	墙面 Wall surface	可饰面一体板 Can be decorated with integrated board
11	地面 Floor	高级木纹锁扣地板 High-grade wood grain lock floor
12	室内灯效 Indoor lighting effect	3000K暖黄光 3000K warm yellow light
13	室外灯效 Outdoor lighting effect	4000K暖白光 4000K warm white light
14	指控系统 Control system	全屋集成智控系统 The whole house integrated intelligent control system
15	插座面板 Socket panel	品牌开关面板 Brand switch panel

全屋设备 (Whole house equipment)		
No.	结构 (Structure)	材料 (Material)
16	空调 Air conditioner	风管机 Ducted air conditioner
17	浴霸 Yuba	风暖式三合一集成浴霸 Air-heated three-in-one integrated bathroom

配置说明

CONFIGURATION INSTRUCTIONS

卫浴五金(Bathroom Fittings)

No.	结构 (Structure)	材料 (Material)
18	卫生间隐私门 Bathroom privacy door	磨砂钢化玻璃 Frosted tempered glass
19	挂衣架毛巾架 Hanger Towel Rack	挂衣架毛巾架 Hanger Towel Rack
20	花洒 Shower	50L桶式热水器 50L bucket water heater
21	台盆 Basin	台上盆 Above counter basin
22	马桶 Toilet	智能马桶 Smart toilet
23	水龙头 Faucet	高脚水龙头 Tall faucet

其他配件(Other Accessories)

No.	结构 (Structure)
24	运输固定件/连接件 Shipping Fixtures/Connectors

选配配件(Optional accessories)

No.	结构 (Structure)	No.	结构 (Structure)
25	窗帘 Curtain	32	循环换气系统 Circulation ventilation system
26	电动窗帘 Electric curtain	33	安全报警: 烟感 Security alarm: smoke
27	插卡通电/取卡通电 Plug in card power/take card power	34	多情景模式功能面板 Multi-scene mode function panel
28	地暖: 电地暖 Floor heating: Electric floor heating	35	照明智能控制 Intelligent lighting control
29	管道防冻: 电伴热 Pipeline antifreeze: electric heat tracing	36	窗帘智能控制 Intelligent curtain control
30	影音设备: 投影仪 Audio-visual equipment: Projector	37	智能语音系统 Intelligent voice system
31	天窗 Skylight	38	酒店链接系统 Hotel link system



PART SEVEN

产品介绍

PRODUCT INTRODUCTION



产品主图

PRODUCT PICTURE



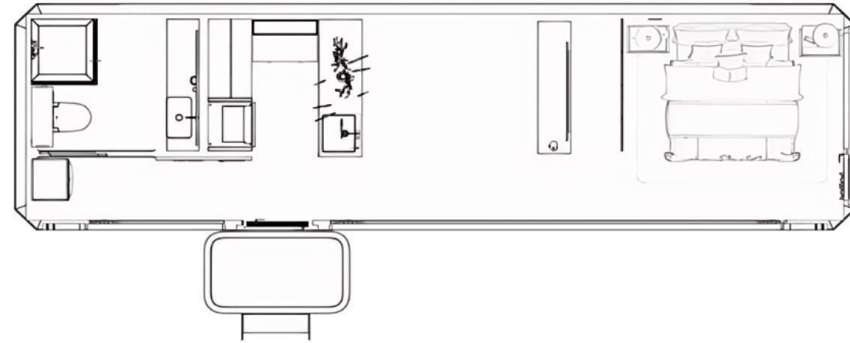
DB

SPACE CAPSULE

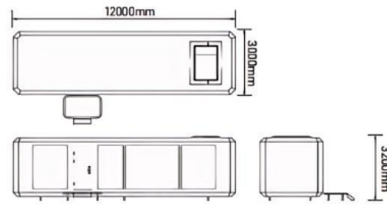


配置说明

CONFIGURATION INSTRUCTIONS



产品信息 (Configuration instructions)	
外形尺寸 Dimensions	12000mm*3000mm*3200mm
占地面积 Floor Area	29.7m ²
入住人数 Occupancy	2人
用电功率 Power consumption	12KW
约总重量 Approximate total weight	8吨



主体外结构 (Extracorporeal structure)		
No.	结构 (Structure)	材料 (Material)
1	钢结构框架 Steel structure frame	钢结构框架 Steel structure frame
2	外墙面板 Exterior wall panels	铝制 Aluminum
3	隔热保温 Heat insulation	100mm聚氨酯保温层 100mm polyurethane insulation layer
4	外墙玻璃 External wall glass	6+18A+6中空LOW-E玻璃或6+6夹胶断热玻璃 6+18A+6 hollow LOW-E glass or 6+6 amine insulating glass
5	外壳表面处理 Shell surface treatment	金属氟碳漆烤漆 Metal fluorocarbon paint baking paint
6	阳台 Balcony	全景阳台(10mm钢化玻璃) Panoramic balcony (10mm tempered glass)
7	外围灯带 Peripheral light strip	外围灯带(环绕氛围灯带) Peripheral light strip (surrounding ambient light strip)
8	入户门 Entrance door	智能门禁系统 Intelligent access control system

舱内环保精装修 (Eco-friendly fine decoration inside Structural materials)		
No.	结构 (Structure)	材料 (Material)
9	天花板 Ceiling	可饰面一体板 Can be decorated with integrated board
10	墙面 Wall surface	可饰面一体板 Can be decorated with integrated board
11	地面 Floor	高级木纹锁扣地板 High-grade wood grain lock floor
12	室内灯效 Indoor lighting effect	3000K暖黄光 3000K warm yellow light
13	室外灯效 Outdoor lighting effect	4000K暖白光 4000K warm white light
14	指控系统 Control system	全屋集成智控系统 The whole house integrated intelligent control system
15	插座面板 Socket panel	品牌开关面板 Brand switch panel

全屋设备 (Whole house equipment)		
No.	结构 (Structure)	材料 (Material)
16	空调 Air conditioner	风管机 Ducted air conditioner
17	浴霸 Yuba	风暖式三合一集成浴霸 Air-heated three-in-one integrated bathroom

配置说明

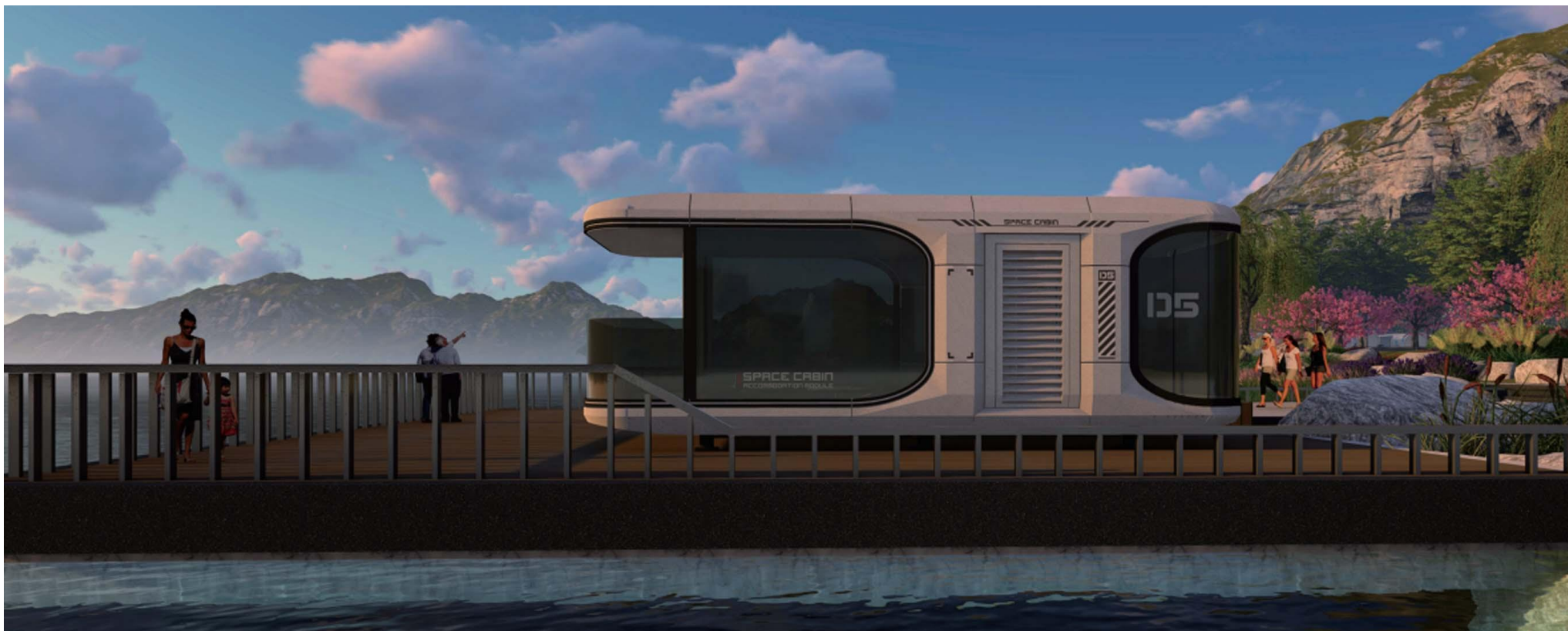
CONFIGURATION INSTRUCTIONS

卫浴五金(Bathroom Fittings)		
No.	结构 (Structure)	材料 (Material)
18	卫生间隐私门 Bathroom privacy door	磨砂钢化玻璃 Frosted tempered glass
19	挂衣架毛巾架 Hanger Towel Rack	挂衣架毛巾架 Hanger Towel Rack
20	花洒 Shower	50L桶式热水器 50L bucket water heater
21	台盆 Basin	台上盆 Above counter basin
22	马桶 Toilet	智能马桶 Smart toilet
23	水龙头 Faucet	高脚水龙头 Tall faucet

其他配件(Other Accessories)	
No.	结构 (Structure)
24	运输固定件/连接件 Shipping Fixtures/Connectors

选配配件(Optional accessories)			
No.	结构 (Structure)	No.	结构 (Structure)
25	窗帘 Curtain	32	循环换气系统 Circulation ventilation system
26	电动窗帘 Electric curtain	33	安全报警:烟感 Security alarm: smoke
27	插卡通电/取卡通电 Plug in card power/take card power	34	多情景模式功能面板 Multi-scene mode function panel
28	地暖:电地暖 Floor heating: Electric floor heating	35	照明智能控制 Intelligent lighting control
29	管道防冻:电伴热 Pipeline antifreeze: electric heat tracing	36	窗帘智能控制 Intelligent curtain control
30	影音设备:投影仪 Audio-visual equipment: Projector	37	智能语音系统 Intelligent voice system
31	天窗 Skylight	38	酒店链接系统 Hotel link system





太空舱宣传册

CONTAINER HOUSE INTRODUCTION